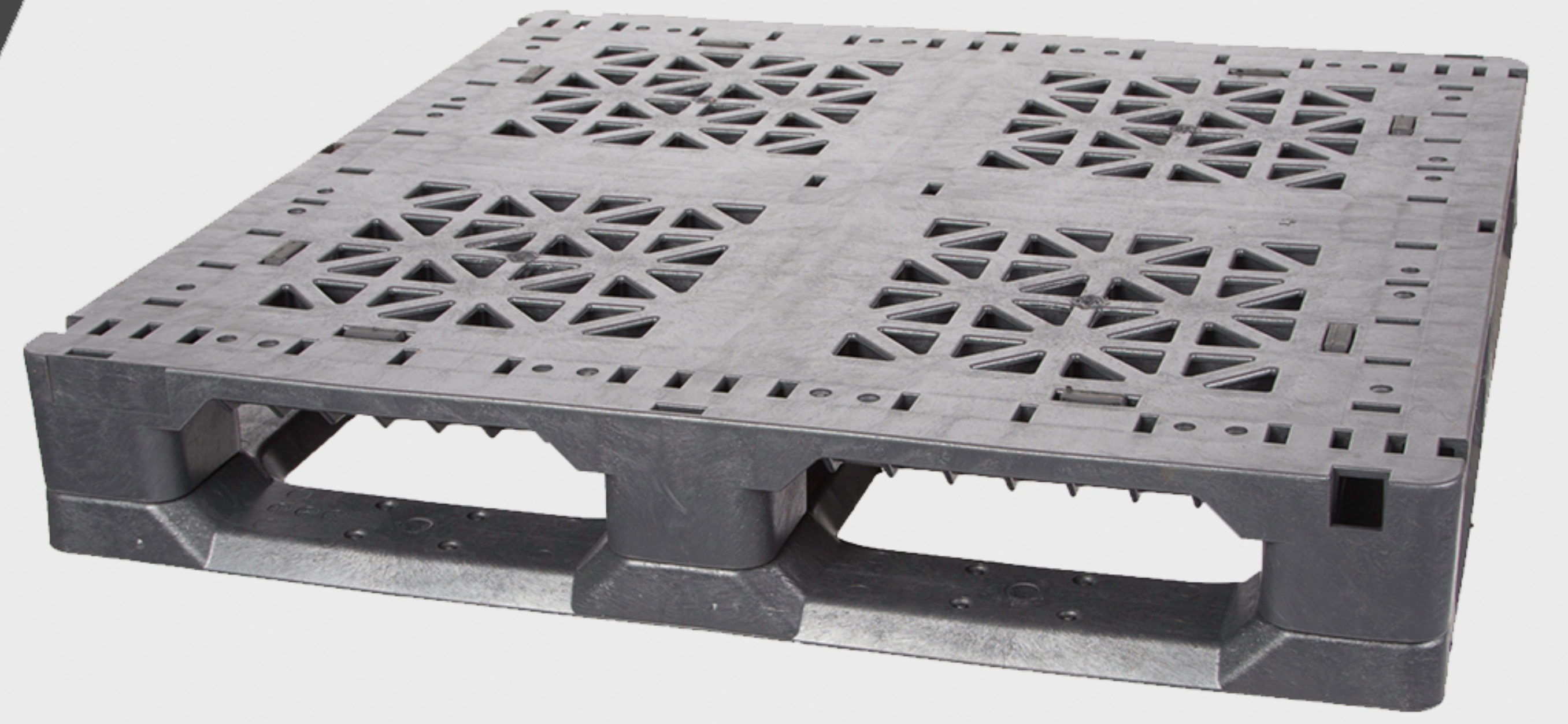




GREYSTONE



GS 37" X 37"

FEATURES & BENEFITS

- 100% RECYCLED PLASTIC (HDPE)
- INJECTION MOLDED
- SANITARY & EASY TO CLEAN
- STRONG & LONG LIFESPAN
- REUSABLE & RECYCLABLE
- IMPACT & WEATHER RESISTANT
- STACKABLE & CONVEYABLE
- 4 WAY ENTRY
- OPTIONAL ROD CONFIGURATIONS



PROTECTS



COST EFFICIENT



SUSTAINABLE

PRODUCT #	GS.3737.6R0	GS.3737.6R4
DESCRIPTION	(6) RUNNER / (0) ROD	(6) RUNNER / (4) ROD
LENGTH (L)	37"	37"
WIDTH (W)	37"	37"
HEIGHT (H)	5.9"	5.9"
WEIGHT	46 lbs.	50 lbs.
STATIC LOAD CAPACITY	25,000 lbs.	25,000 lbs.
DYNAMIC LOAD CAPACITY	5,000 lbs.	5,000 lbs.
RACKING CAPACITY	1,200 lbs.	2,100 lbs.
53' TRAILER QUANTITY	576	576
40' SEA CONTAINER	408	408



GREYSTONE MANUFACTURING
 2601 SHORELINE DRIVE
 BETTENDORF, IA 52722
 WWW.GREYSTONEPALLET.COM



MARILYN CARTER
 PM & INSIDE SALES
 563-332-0052
 MMC@GSTMFG.COM

Greystone guidelines are established from internal testing and does not constitute any warranty related to each customer's application. All Greystone products are sold with the understanding that the customer will validate for themselves the suitability of the product for their specific application. As each product application is unique, the customer assumes all risks associated with the determination and actual use of the pallet.